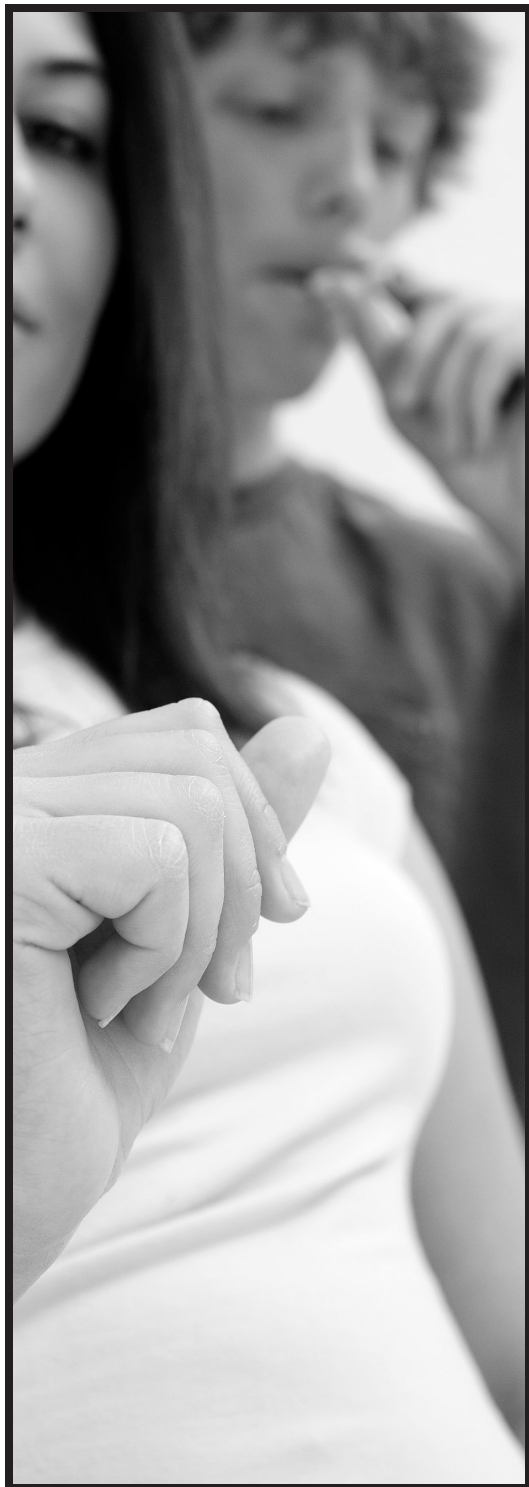


**JUST
SAY
"NO"
TO
DRUGS**



Mark M. Gillen

State Representative
128th Legislative District

DISTRICT OFFICE:

29 Village Center Drive, Suite A7
Reading, PA 19607
Phone: (610) 775-5130
Fax: (610) 775-3736

HARRISBURG OFFICE:

PO Box 202128
Harrisburg, PA 17120-2128
Phone: (717) 787-8550
FAX: (717) 783-7862
email: mgillen@pahousegop.com

RepGillen.com



**A Few
Words
About
Drugs...**

Cocaine:

also called “coke”,
“snow”, “flake”,
“gold dust”, etc.

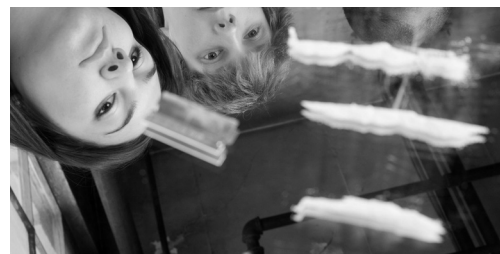
Cocaine is a white powder made from the leaves of the coca bush, one of the oldest known anesthetics.

Legal classification – narcotic
Medical use – formerly as a local anesthetic, but rarely used today
How abused – sniffed, swallowed, injected into veins, or smoked in “free base” form

How does cocaine work?
It “deadens” the nerves, especially the mucous membranes of the eyes, nose and throat – and it acts as a stimulant on the central nervous system.

Why do people abuse cocaine?
For pleasure, thrills, kicks – for feelings of self-confidence, alertness.

But overdose may cause *hallucinations*, may affect spinal cord and cause *convulsions*, may cause respiratory failure and *death*. Sniffing may cause *ulcerations* (open sores) in nasal cavity.



IS COCAINE REALLY DANGEROUS? **Yes**

Although physical dependence may not develop, users can become mentally dependent on its effects. The body may build a tolerance to cocaine, requiring larger and larger amounts to produce the same effect.

- Dosage is difficult to predict since “street” cocaine is often mixed with other substances.
- Danger of overdose is greater when “free-based” or injected.
- Stimulation may be followed by severe depression.
- Depressed heart and respiratory functions may cause death!!

AND — COCAINE IS ILLEGAL

Federal legal controls are based on the Controlled Substance Act of 1971. Crimes and penalties include:

Unlawful possession
1st offense - up to 1 year imprisonment and/or fines up to \$5,000.
2nd offense - twice the imprisonment and fines of first offense.

Unlawful distribution or possession with intent to distribute.
1st offense - up to 15 years imprisonment and/or fines up to \$25,000 plus 3 years special parole.
2nd offense - up to twice that of first offense.

Marijuana: “pot”, “grass”, “weed”, “smoke”

Known legally as cannabis, this category includes hashish and hashish oil. Marijuana acts quickly, in about 15 minutes, and its effects last 2-4 hours. Marijuana can affect mood, thinking behavior and judgment, and cause hallucinations. Marijuana may damage lungs, affect sex hormone levels, strain heart, slow reflexes, and cause psychological dependence.

How can I turn down marijuana when everyone else is using it? People will respect you for knowing what you want. It’s your business – your body and mind.

Marijuana is illegal and yields of prison sentence and fine!!

Heroin:

“H”, “Horse”, Junk”, “Hard Stuff”, “White Stuff”, “Smack”, “Scag”



Heroin is a drug that comes from the opium poppy.

Legal classification – narcotic
Medical use – none
How abused – may be cooked into a solution, injected into a vein or the skin, taken orally.

How does heroin work?
In a few seconds, face flushes, pupils constrict, a tingling in abdomen leading to a feeling that everything is fine, I’m fixed ... later drowsiness, usually lasts 3-4 hours.

Why do people abuse heroin?
To escape from physical or mental problems – and *reality* – into a *dream stupor* or for *kicks* to try something new or to do what others do. Fortunately, most young people are wary of “hard stuff” – they know it is habit-forming, expensive and hard to cure.

Heroin is addicting!

OVERDOSE can cause DEATH
WITHDRAWAL symptoms: severe influenza (nausea, cramps, chills, sweating, watery eyes and running nose, restless tossing - both painful and dangerous - *often a way to spot addiction*).
LEADS TO CRIME: Heroin is an expensive habit and addicts usually resort to crime to support it.

HEROIN IS ILLEGAL

1st offense - up to 15 years imprisonment and/or fines up to \$25,000 plus 3 years required special parole.

2nd offense - up to twice that of first offense.

For a person over 18 unlawfully distributing to a person under 21 - up to twice the fine and imprisonment otherwise authorized.